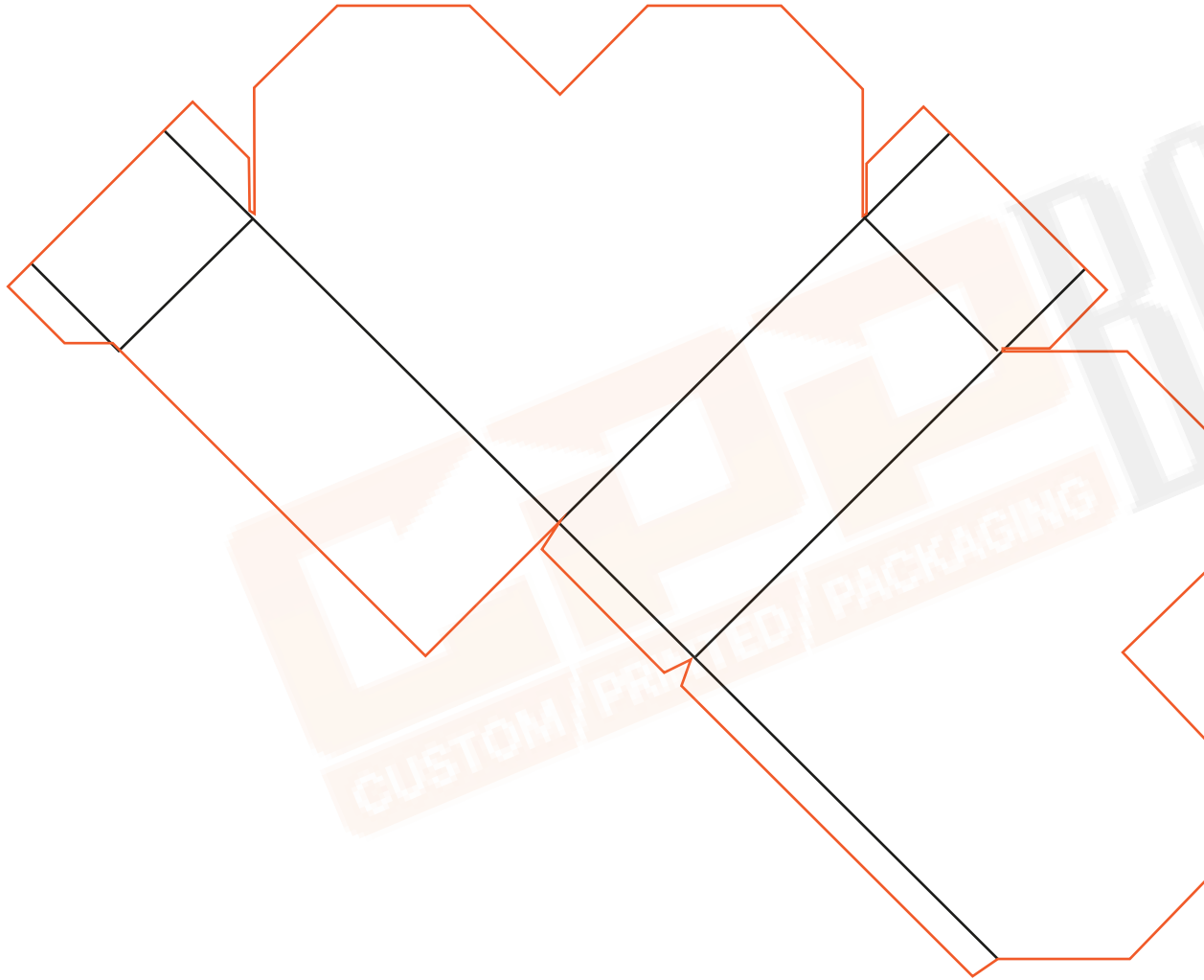


Eye-Catching Heart-Shaped Box for Perfumes' Packaging by **CPP Boxes**


Excellent Choice for Premium or Curated Skincare Items



Heart-Shaped Box

- Unique and eye-catching heart shaped structure to grab customers' attention.
- Strong and durable composition.
- Available in custom sizes, colors, prints, and designs.
- Perfect for the packaging of perfumes aimed at gifting, Valentine's, or special occasions.
- Ideal for turning your perfume packaging into a keepsake worthy piece.

 Bleed Area

 Folding Area